

# **ÅRE ÖSTERSUND** **RNP y RWY 12 (AR)**

## **INSTRUMENT** **APPROACH** **CHART – ICAO**

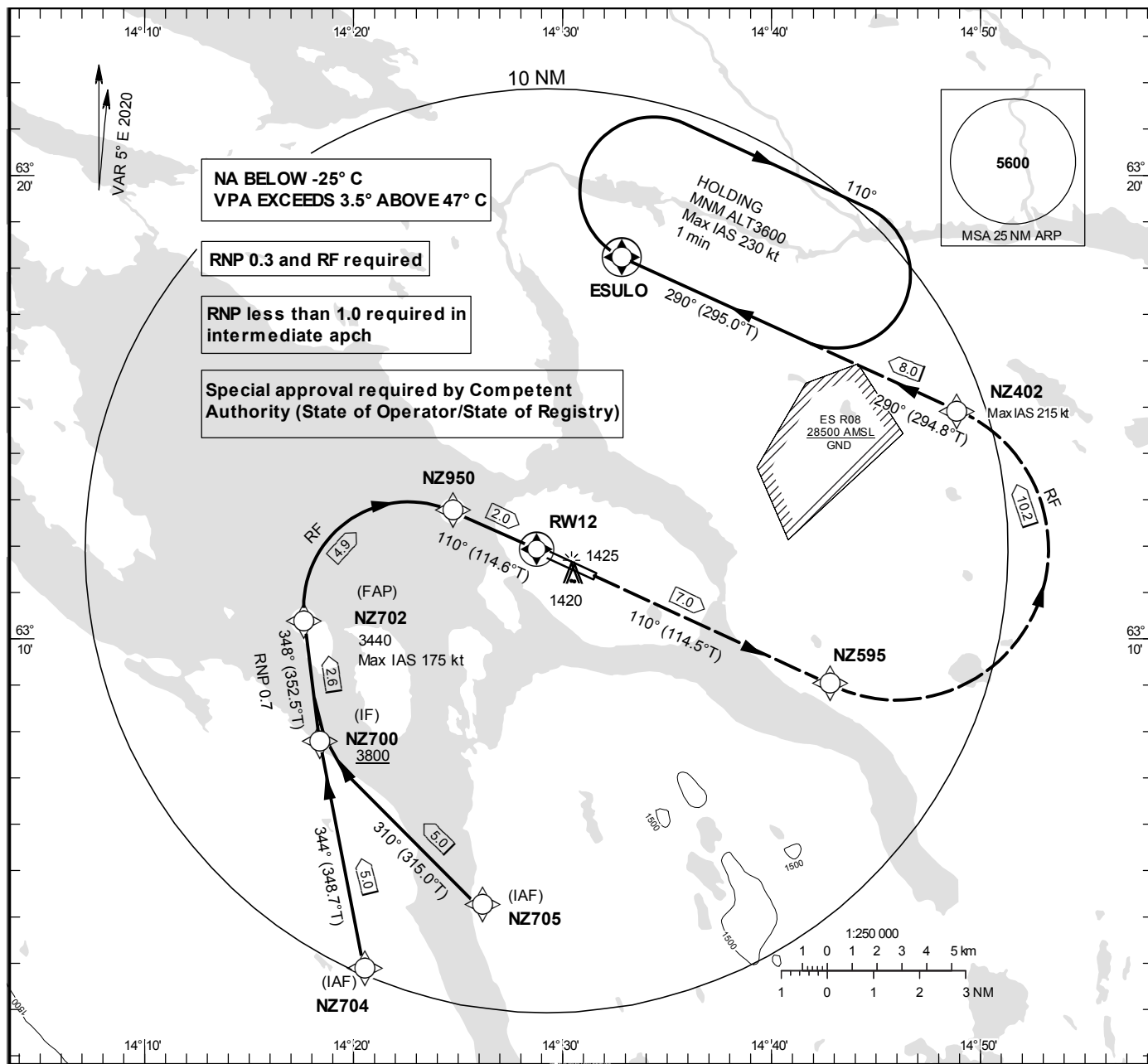
THR ELEV 1194.3 ft, AD ELEV 1233 ft

OCH are related to THR.

BRG are MAG (True).

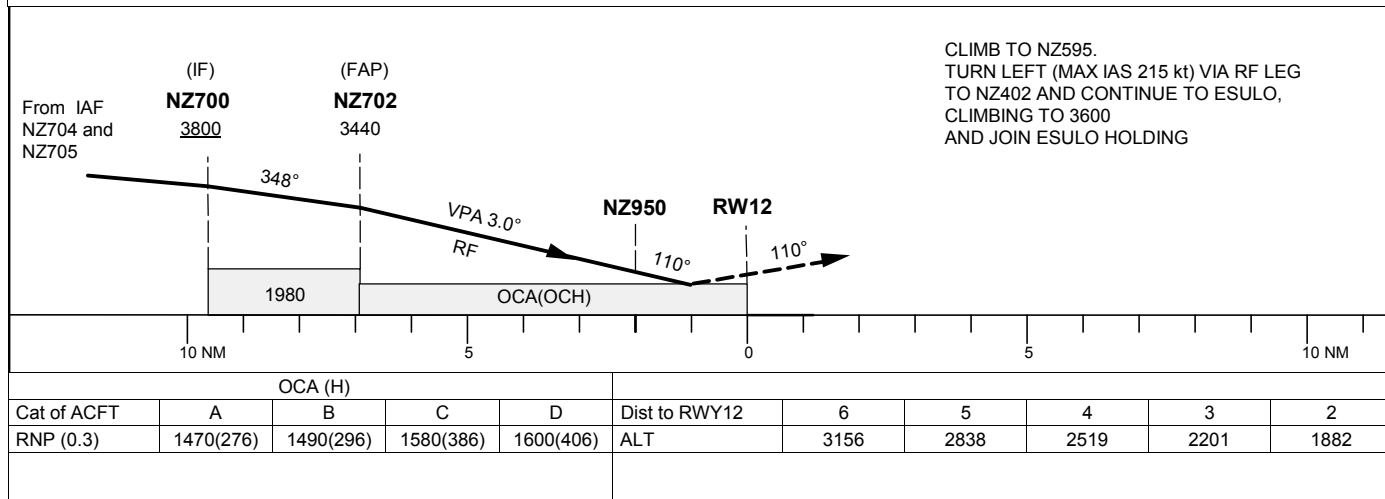
ALT, HGT and ELEV in ft.

ÖSTERSUND TOWER 135.655



TA 6000 ft AMSL

RDH 51.2 ft



CHANGE: Editorial

ÅRE ÖSTERSUND

RNP y RWY 12 (AR)

RNP y RWY 12 (AR) via NZ704

Path Desc	Waypoint Identifier	Fly-over	Course °M(°T)	Dist (NM)	Turn Dir	Altitude	Speed (kt)	VPA/ RDH(°/ft)	ARC Radius (NM)	ARC Center	Nav Spec
IF	NZ704	-	-	-	-	-	-	-	-	-	RNP 1.0
TF	NZ700	-	344° (348.7°)	5.0	-	+3800	-	-	-	-	RNP 1.0
TF	NZ702	-	348° (352.5°)	2.6	-	@3440	-175	-	-	-	RNP 0.7
RF	NZ950	-	-	4.9	R	-	-	-3.0	2.300	NZ703	RNP 0.3
TF	RW12	Y	110°(114.6°)	2.0	-	@1245	-	-3.0	-	-	RNP 0.3
TF	NZ595	-	110°(114.5°)	7.0	-	-	-	-	-	-	RNP 1.0
RF	NZ402	-	-	10.2	L	-	-215	-	3.260	NZ401	RNP 1.0
TF	ESULO	Y	290°(294.8°)	8.0	-	-	-	-	-	-	RNP 1.0
HM	ESULO	-	290°(295.0°)	-	R	+3600	-230	-	-	-	RNAV1

RNP y RWY 12 (AR) via NZ705

Path Desc	Waypoint Identifier	Fly-over	Course °M(°T)	Dist (NM)	Turn Dir	Altitude	Speed (kt)	VPA/ RDH(°/ft)	ARC Radius (NM)	ARC Center	Nav Spec
IF	NZ705	-	-	-	-	-	-	-	-	-	RNP 1.0
TF	NZ700	-	310° (315.0°)	5.0	-	+3800	-	-	-	-	RNP 1.0
TF	NZ702	-	348° (352.5°)	2.6	-	@3440	-175	-	-	-	RNP 0.7
RF	NZ950	-	-	4.9	R	-	-	-3.0	2.300	NZ703	RNP 0.3
TF	RW12	Y	110°(114.6°)	2.0	-	@1245	-	-3.0	-	-	RNP 0.3
TF	NZ595	-	110°(114.5°)	7.0	-	-	-	-	-	-	RNP 1.0
RF	NZ402	-	-	10.2	L	-	-215	-	3.260	NZ401	RNP 1.0
TF	ESULO	Y	290°(294.8°)	8.0	-	-	-	-	-	-	RNP 1.0
HM	ESULO	-	290°(295.0°)	-	R	+3600	-230	-	-	-	RNAV1